

Reversível

Designer: Martin Eisler
Year: (1955) 2019

Fruit of the creative genius of the architect and designer Martin Eisler, Reversível is an historic piece of Carioca design, and Tacchini fell in love with its incredibly innovative style. With the simplicity of its lines and movement, this armchair transforms with casual elegance. The dynamic, flexible reissue of Reversível offers dual comfort with two possible seat positions, to sit in the chair with the back upright, or really relax in a semi-reclining position, parallel with the backrest. The simple, natural movement makes it seem an obvious solution, but it actually represents as ground-breaking an intuition now as then. This original, informal seat with its distinctive lines is completed with a metal structure and fabric coverings. Reversível bears witness to the soft, sensuality of Brazilian 1950s design, a combination of tradition and creativity, folk craft and visionary innovation.

Awards: Archiproducts Design Awards 2019, German Design Awards 2021

Developed by Tacchini in Italy

Dimensions (cm)

Cod. OREV104



W 104 D 73 cm
H 68 cm
H seat 34 cm

Removable fabric
and leather covers

CAD Files:
3D (.dwg, .3ds)
2D (.dwg)

Download CAD
files at [tacchini.it/
en/downloads](http://tacchini.it/en/downloads)

Materials description

Backrest: 25 mm poplar plywood.

Seat: iron insert with elastic belts.

Padding: differentiated-density polyurethane foam.

Metal base Ø 15 mm painted T07.

T25 chromed iron feet.

Upholstery: not removable.

Base (only for Reversível Millennium)

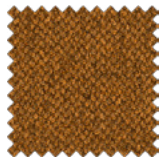


T16 RAL 5003
Blue

Suggested upholsteries



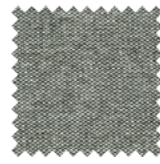
Bakul



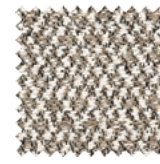
Bamboo



Bopha



Bryony



Cacao



Caladium



Calantha



Cambria



Descampsia



Dianella



Dionea



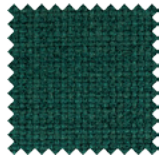
Dulcamara



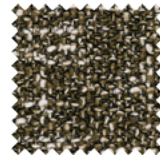
Euclidium



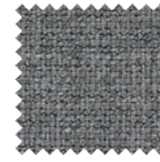
Eugenia



Evonimo



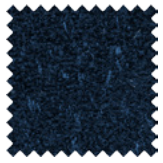
Eremurus



Escallonia



Escobaría



Laelia



Lamium



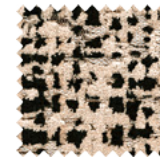
Lars



Loren



Ligustrum



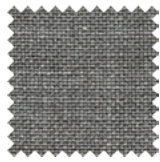
Salix



Sedum



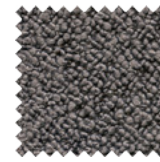
Schinus



Thesium



Tibouchina

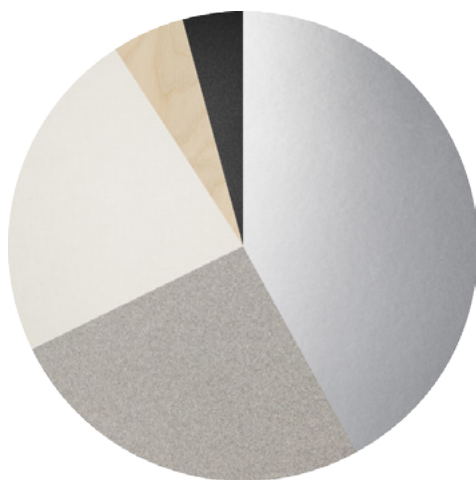


Ricinus



Mirabilis

Materials informations



Metal	42%
Padding	26%
Upholstery	23%
Poplar plywood	5%
Elastic belts	4%

Polyurethane

Flexible expanded polyurethane is a solid elastic polymeric material with open cell structure. It is a non-toxic material and above all free from ozone-damaging components. Production and processing of the polyurethane we use meet the objectives of the new policy of ensuring the protection of human health and of the environment. We focus in particular on the choice and use of the types of density of polyurethane suitable for preserving over the years the features of load capacity, elasticity and resilience. For products used in public spaces flame-retardant expanded polyurethane is chosen, tested and certified according to international regulations.

Metal

The need to combine complex yet lightweight shapes with resistant materials necessarily involves the use of metals such as steel and aluminium. Products in polyurethane foam are made with an inner steel frame for adding strength to the structure. The bases are in tubular metal which can be chromed with a gloss or satin finish or painted with epoxy powders.

Wood

Wood is a renewable raw material. All products derived from wood, such as for example plywood, have the advantage of being able to be machined more easily than wood and do not deform. The timber we use – solid or plywood – comes mainly from European and Russian forests and is seasoned to specific values of humidity with tests. Most of the structures of the products in the collection have a frame in solid pine or ash, or in beech or poplar plywood.

Recyclability

All Montevideo elements are 100% recyclable when fully separated. Tacchini undertakes on-going research and development, with efforts made to introduce products which are a perfect combination of function and safety without jeopardizing the final design of the same articles. During production attempts are made to minimize noise and emission levels and to reduce rejects as far as possible. All the single materials which make up the production process, once disassembled, can be reused several times, maintaining a high quality standard.

Packaging

Montevideo element is dispatched already assembled. It is protected by tissue paper and cellophane to protect the covering from dust and direct contact with the cardboard. The product is packed in rigid cardboard boxes suitable for world export. Manufacture of the packaging observes the criteria for recovery both as recycling and energy recovery and composting.

Once a product reaches the end of its life cycle it has to be eliminated.

To discover more about Tacchini environmental policy please visit: www.tacchini.it



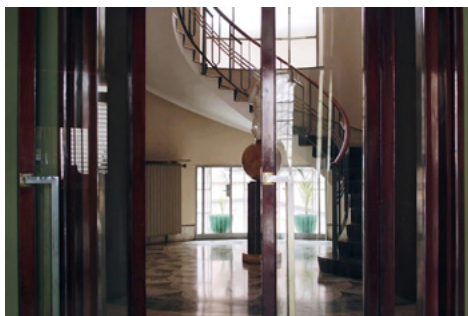
Martin Eisler

Born in Vienna in 1913, the son of the famous art historian Max Eisler, one of the founding members of the Austrian Werkbund, Martin Eisler studied in Vienna under the noted architects Oskar Strnad and Clemens Holzmeister. In 1938 he moved to Buenos Aires, where he immediately set about holding his first exhibition of designs and furniture at the Mueller Gallery, which became the National Office of Fine Arts in 1940, in the Palais de Glace. In 1945 he founded the business Interieur with Arnold Hackel, which sold furniture and objects designed by the duo, launching his career as a designer. His work also took him to Brazil, where in 1955 he went into partnership with Carlo Hauner from the company Moveis Artesanais, and became Art Director of the company Forma in São Paulo. Eisler's experience in Brazil aroused his interest in exotic woods and varnishing and lacquering techniques on wood, glass and bronze. Eisler's two businesses subsequently began to work synergistically, producing furniture that was highly successful both in Argentina and in Brazil, which culminated in him signing a contract with Knoll International between the late '50s and early '60s. This led to his growth and establishment at a time when the contract furniture market was at the height of its expansion, with the founding of the new capital city Brasilia and the Oscar Niemeyer projects, to which he contributed with great success. Also greatly appreciated as an architect for his projects characterised by their all-encompassing creativity, which customised every detail, from buildings to furniture, Eisler also worked as a set designer and opera director. His most famous design pieces include the Reversível and Costela chairs. The famous auction house, Christie's registered the first purchase in 1999. Martin Eisler's furniture has always been highly esteemed throughout the world.

Selected project



Private House
(Milan, Italy)



Private House
(Milan, Italy)